

Where life happens!

The logo for Tulsi NEST Apartments is located in the bottom right corner. It features a small green tulsi leaf icon above the word "tulsi" in orange. Below "tulsi" is the word "NEST" in a large, bold, green serif font. Underneath "NEST" is the text "Apartments, Edappally" in a smaller, black sans-serif font. The entire logo is set against a light yellow circular background.

tulsi
NEST
Apartments, Edappally



A Tradition of Delight!

A great tradition backed by a decade worth of experience and expertise makes Tulsi Developers one of the pioneering brands in branded-housing sector of Kerala. We have today grown into the stature of a much relied and trusted name with consistent delivery of projects, innovative and luxurious living solutions across the Finest residential locations of Kochi. Tulsi believes in the philosophy of building smiles across the faces of customers through providing them the true value of their Investments, that too on-time. It is with this thought that every day begins at Tulsi, yes with the relentless passion to deliver the 'perfect home'. Thousands of satisfied customers across the world, bears testimony to this fact. Come, start a lifelong relationship founded on delight.



tulsi
NEST
Apartments, Edappally





Forget the Rest, go for the Nest!

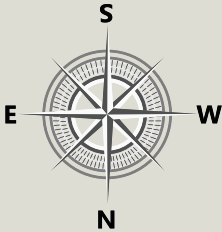
Tulsi Developers is providing yet another opportunity for city dwellers to own a home at the most prime location with Tulsi NEST. The apartment project offers 2BHK apartments, varying in size from 890 sqft to 970 sqft. The project makes optimum utilization of space, with contemporary design and elevation. For anyone who wants to own an affordable home, at the city's most happening location, forget the rest, go for nest!

THE BEST IN
OPTIMUM
SPACE
UTILISATION





TYPICAL
FLOOR PLAN



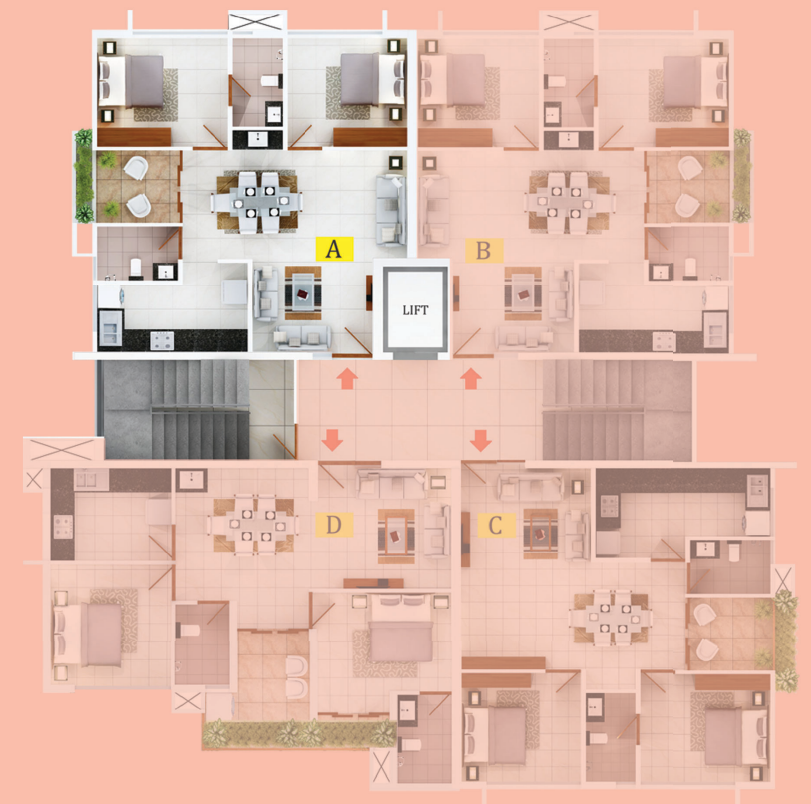
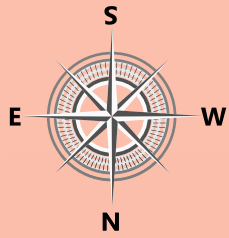


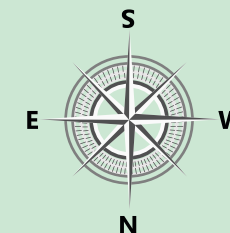
Welcome to the Nest of Affordable Luxury!

Tulsi NEST creates a luxurious ambience for convenient and comfortable living. The environment is enriched with landscape, garden terrace, mini health club, children's play area, generator back up and a host of other externalities too. For the one who is in search of affordable luxury, here is the best you can get!

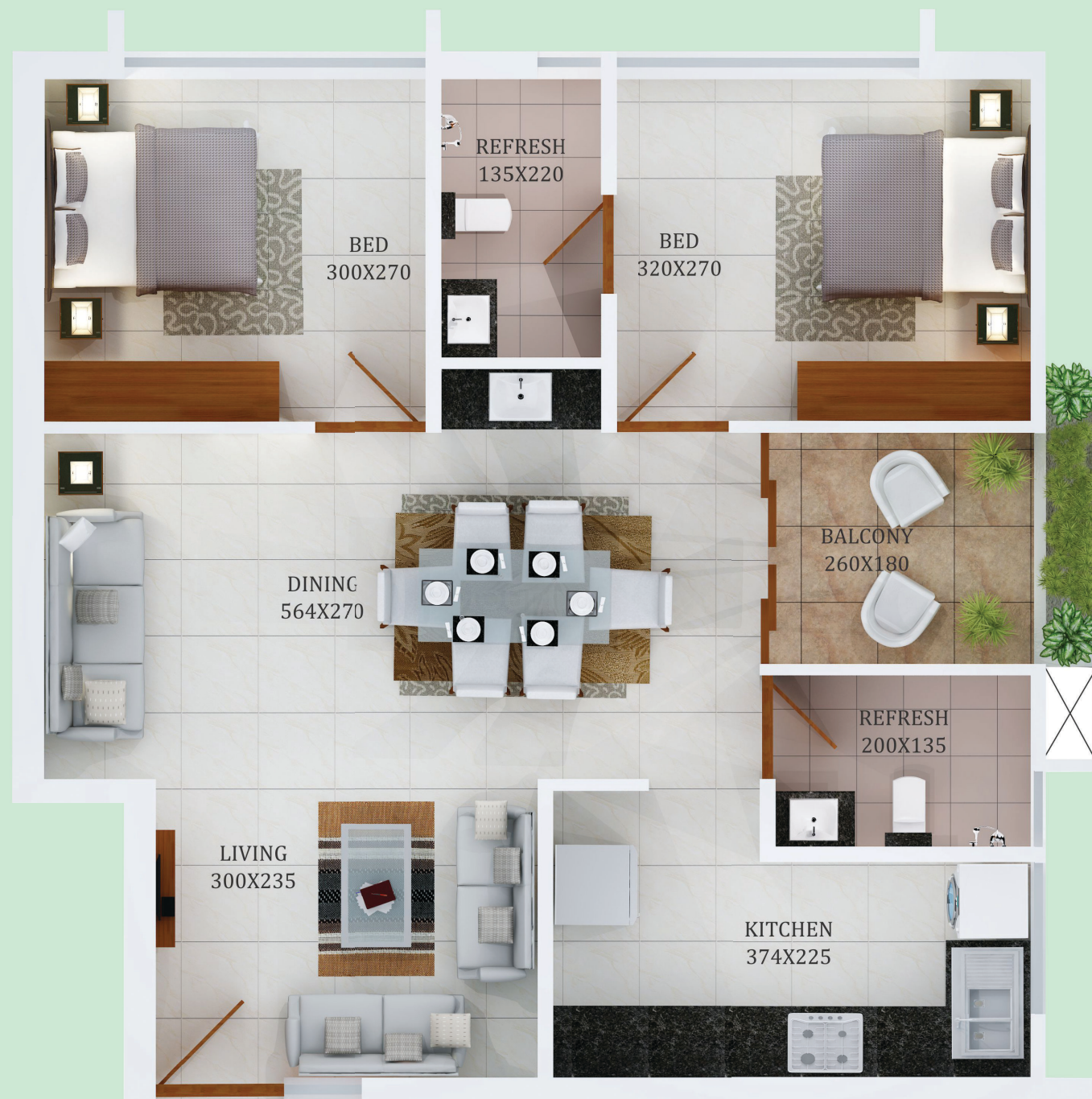


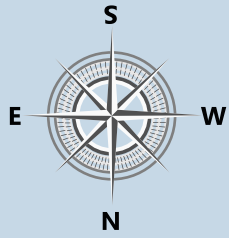






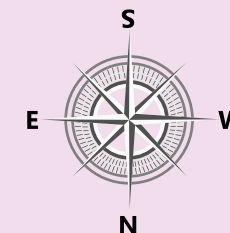
TYPE B (2BHK)
TOTAL Sq.Ft. - 890





TYPE C (2BHK)
TOTAL Sq.Ft. - 917

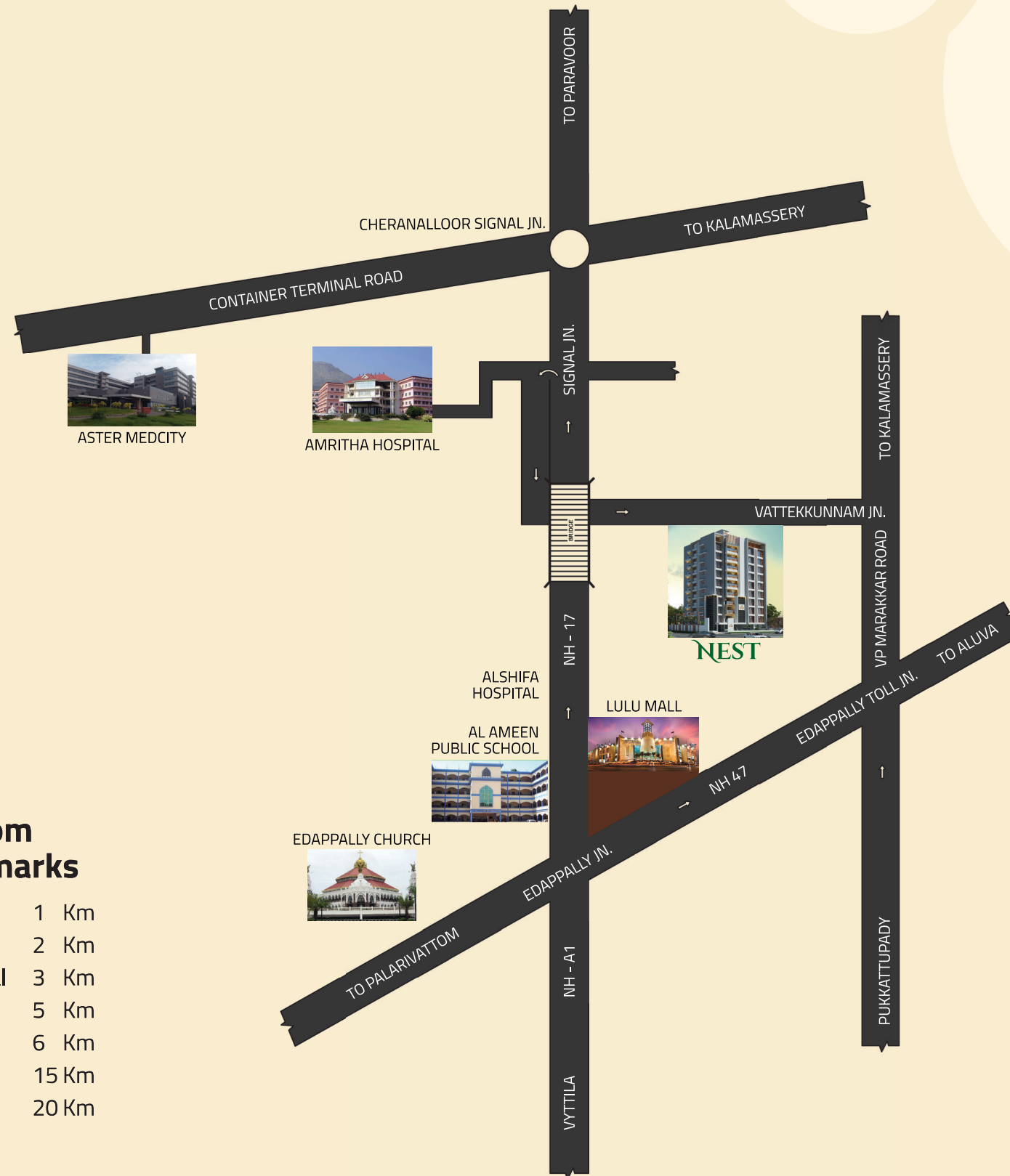




TYPE D (2BHK)
TOTAL Sq.Ft. - 970



Location Map



Distance From Major Landmarks

- Lulu Mall 1 Km
- Container Road 2 Km
- Amritha Hospital 3 Km
- Aster Medicity 5 Km
- Kalamassery 6 Km
- Marine Drive 15 Km
- Airport 20 Km

Specifications

Civil

Foundation	:	Recommended as per Architect or Structural Engineer
Structure	:	RCC framed Structure . Solid Block Masonry for the super structure

Flooring

General	:	Superior Quality Vitrified tiles-Entire area and skirting
Toilets for Bedroom	:	Premium Quality vitrified or ceramic tiles

Windows

Windows	:	Powder coated Aluminium sliding windows with MS grill
---------	---	---

Door

Entrance Door	:	Good quality Hard wood frames and shutters
Internal Door	:	Good quality Hard wood frames with Veneered flush door shutter
Toilet door	:	Good quality Hard wood frames with laminated flush door shutter
Balcony Door	:	Powder coated Aluminum Sliding door

Painting

Internal	:	Acrylic Emulsion with putty finish
External	:	Weather coat paint

Electrical

Wires	:	All wires Finolex or equivalent
Switches	:	All switches are Wipro/Legrand/Havells or equivalent
Telephone	:	Provision for Telephone and Cable TV in Living Room
Master Bedroom	:	Provision for AC Point
Generator	:	Back Up generator for common facilities and limited points inside the apartment

Plumbing and Sanitation

Plumbing and Sanitation	:	Bathroom fittings are Jaquar or equivalent
-------------------------	---	--

Kitchen

Kitchen Top	:	Granite top with stainless steel Bowl
	:	Glazed tiles above the working platform up to the height of 60 cm

Water Supply

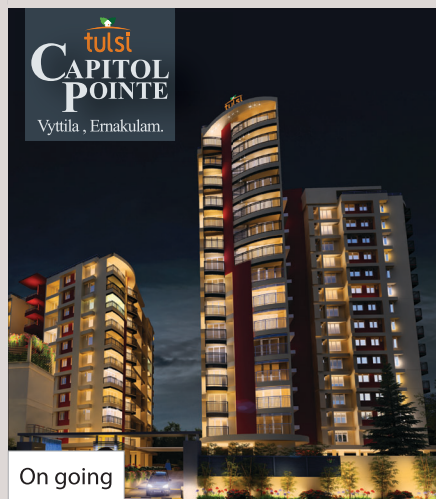
Water Supply	:	Ground Water supply through under ground Sump tank and Over head tank with sufficient storage capacity
	:	KWA connection for drinking purpose to Kitchen zink

Staircase

Tiles	:	Granite with vitrified tiles
Hand rail	:	M S

Common Amenities

- Landscape
- Garden on terrace
- Mini Health club
- Association hall
- Library
- Intercom facility
- Children's Play area



CALL: INDIA : + 91 9020300200 enquiry@tulsidevelopers.org

TULSI DEVELOPERS INDIA PVT LTD. II nd floor KCRA Line no 5, Signal Junction. Near Civil Station, Kakkand.

